



Instrucciones para importar las librerías de Smart Implant Solutions en el software Dental Wings.

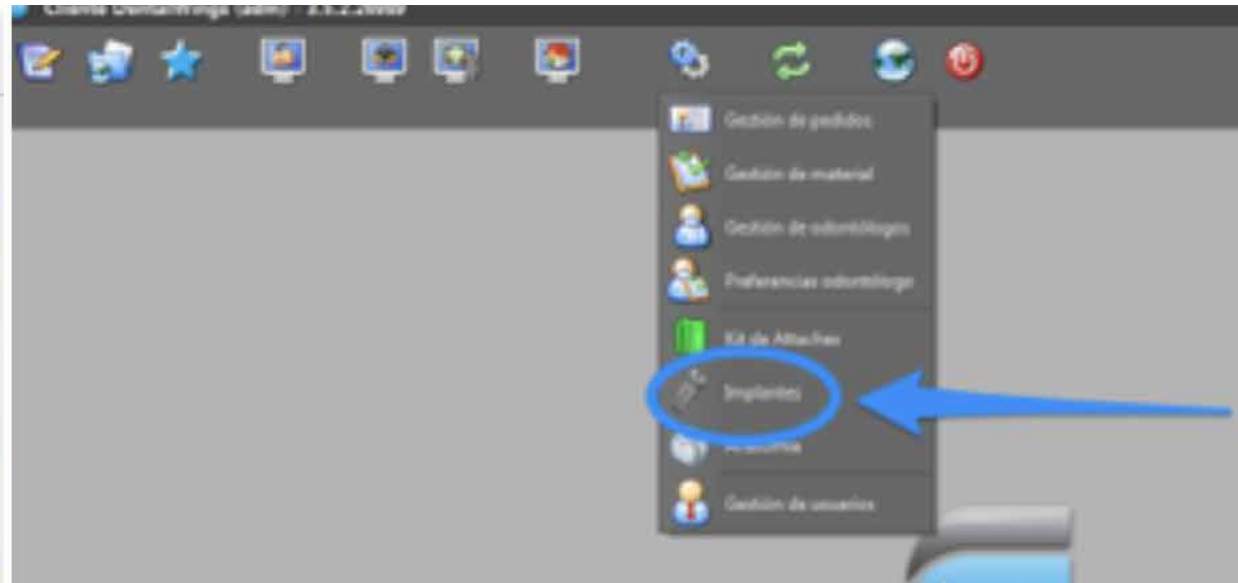
1. DESCARGAR EL SOFTWARE



1. Desde un ordenador, conectarse a: www.smartimplantsolutions.com
2. En el menú DESCARGAS, ir al apartado CAD/CAM y pulsar en "LIBRERÍA DENTAL WINGS". Se descargará un archivo llamado "SIS Dentalwings.zip" en la carpeta Descargas de su PC.

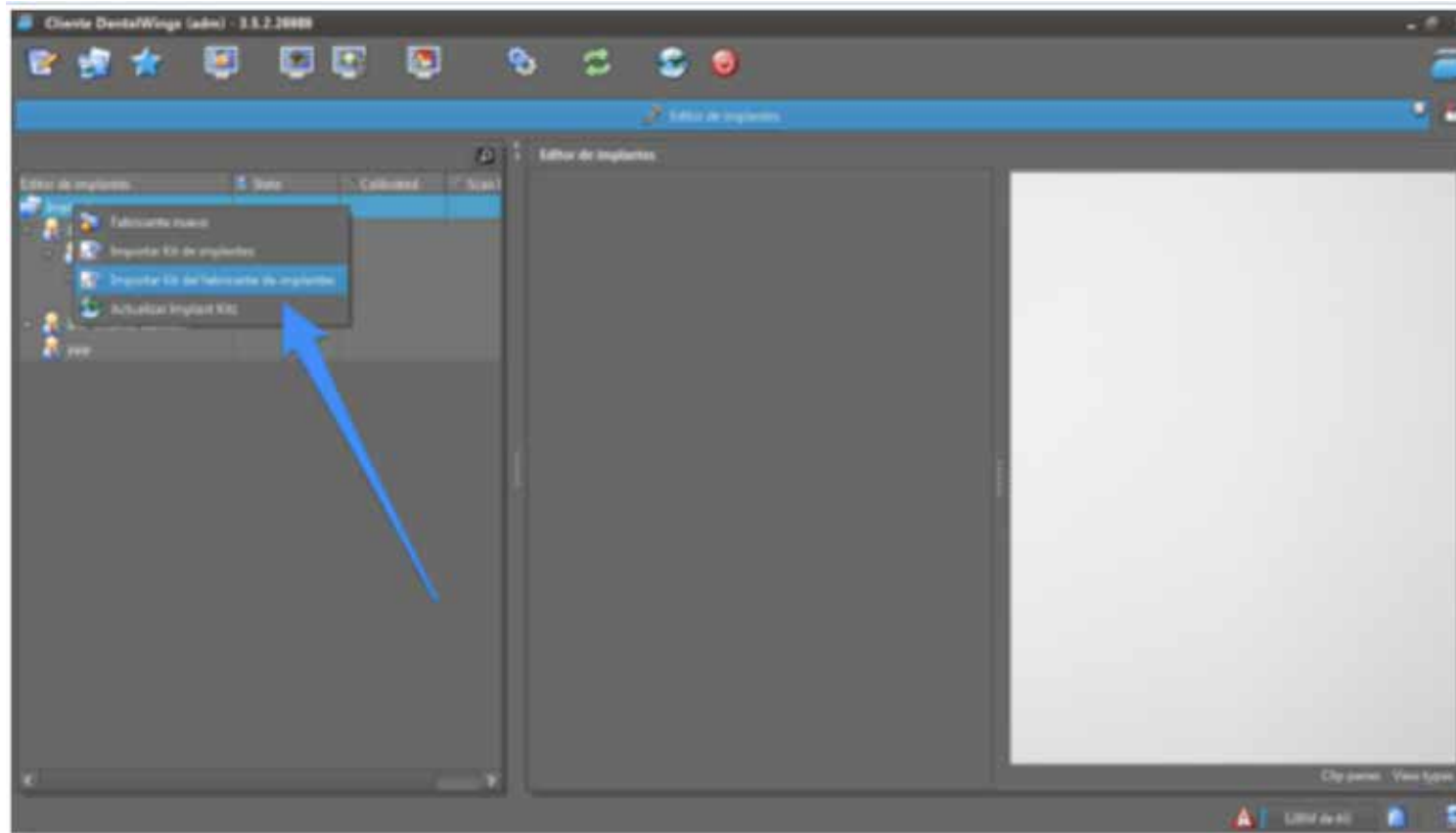
2. IMPORTAR LA LIBRERÍA DE SMART IMPLANT SOLUTIONS

1. Importar la librería en DWClient.
2. Seleccionar en el menú Aplicación -> Implantes.



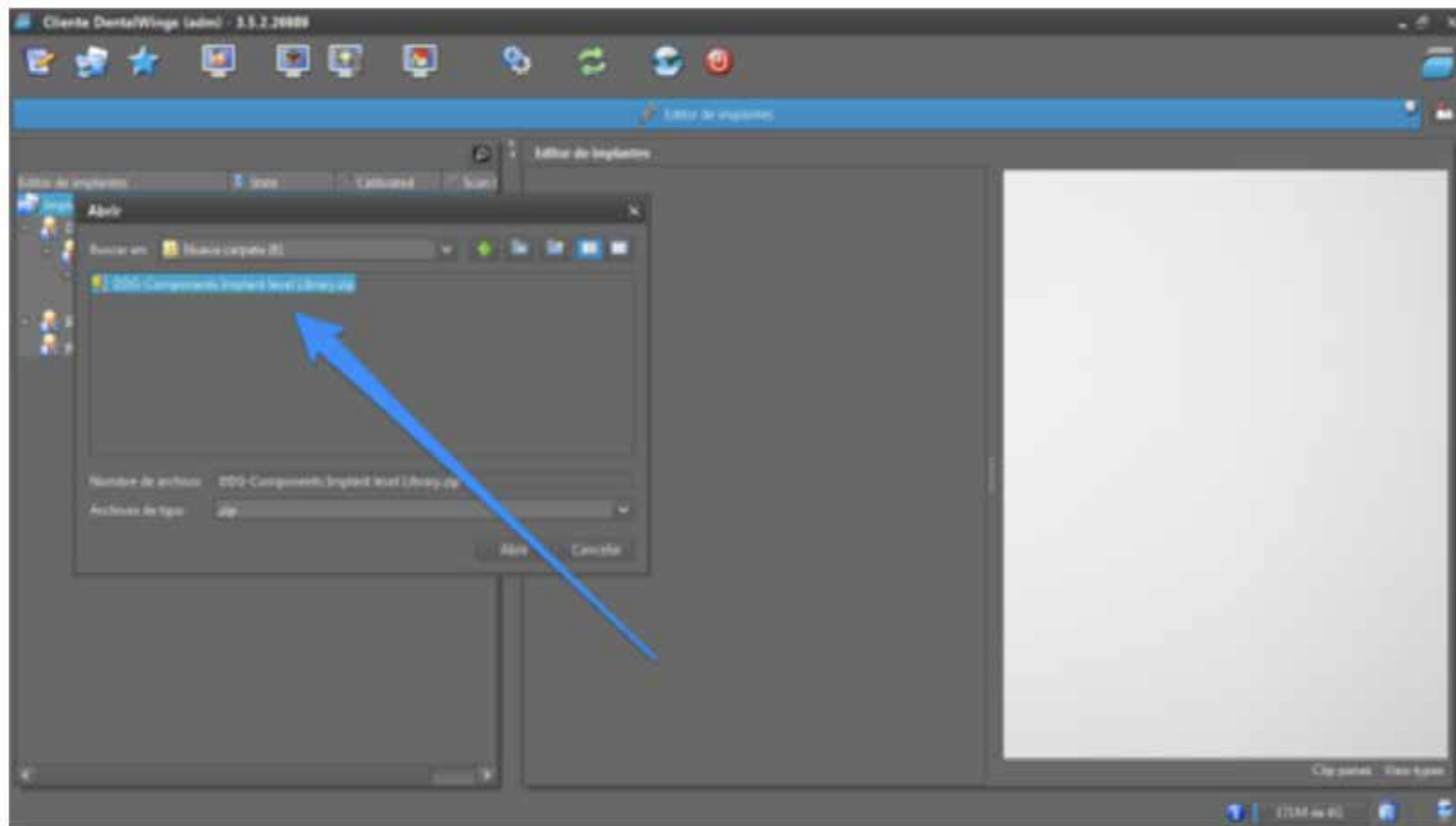
2. IMPORTAR LA LIBRERÍA DE SMART IMPLANT SOLUTIONS

3. Coloque el cursor sobre "Implantes" y pulse el botón derecho.
4. En el menú desplegable seleccione "Importar kit del fabricante de implantes".



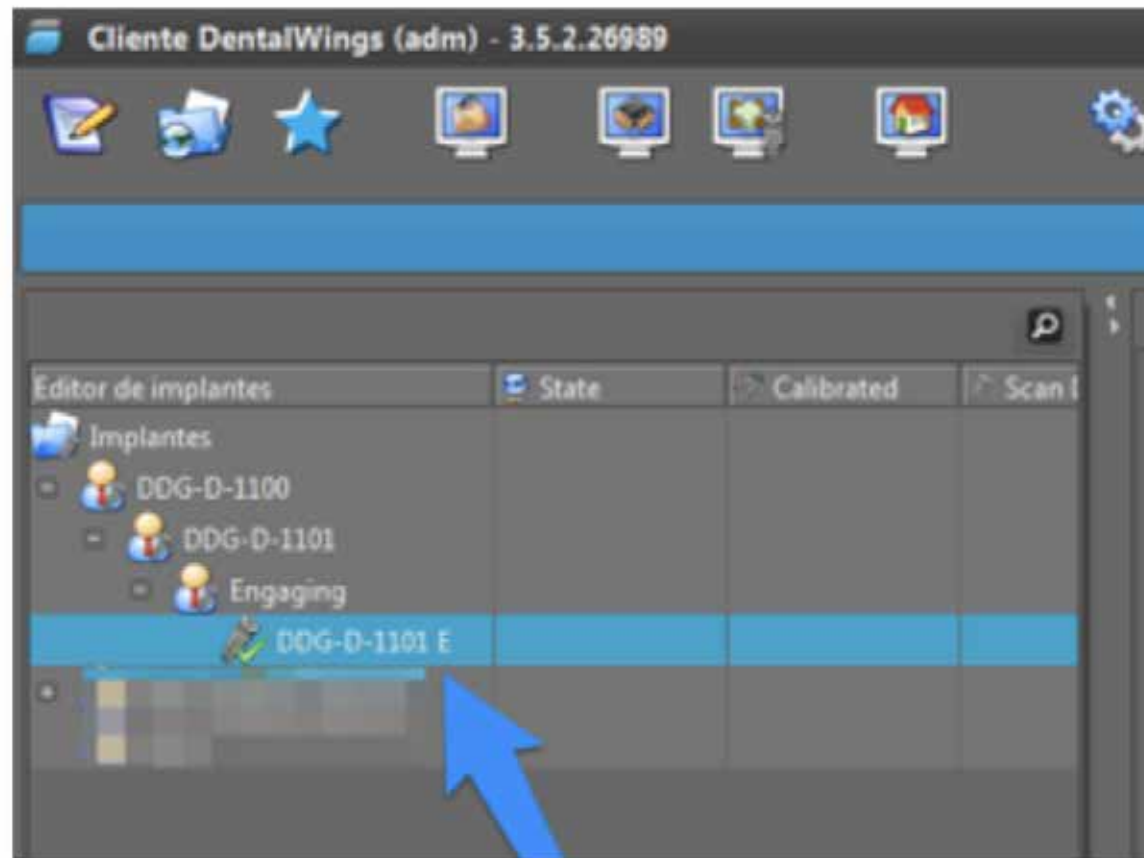
2. IMPORTAR LA LIBRERÍA DE SMART IMPLANT SOLUTIONS

5. Localizar el fichero descargado (estará en la carpeta Descargas de su PC) y pulsar "Abrir".



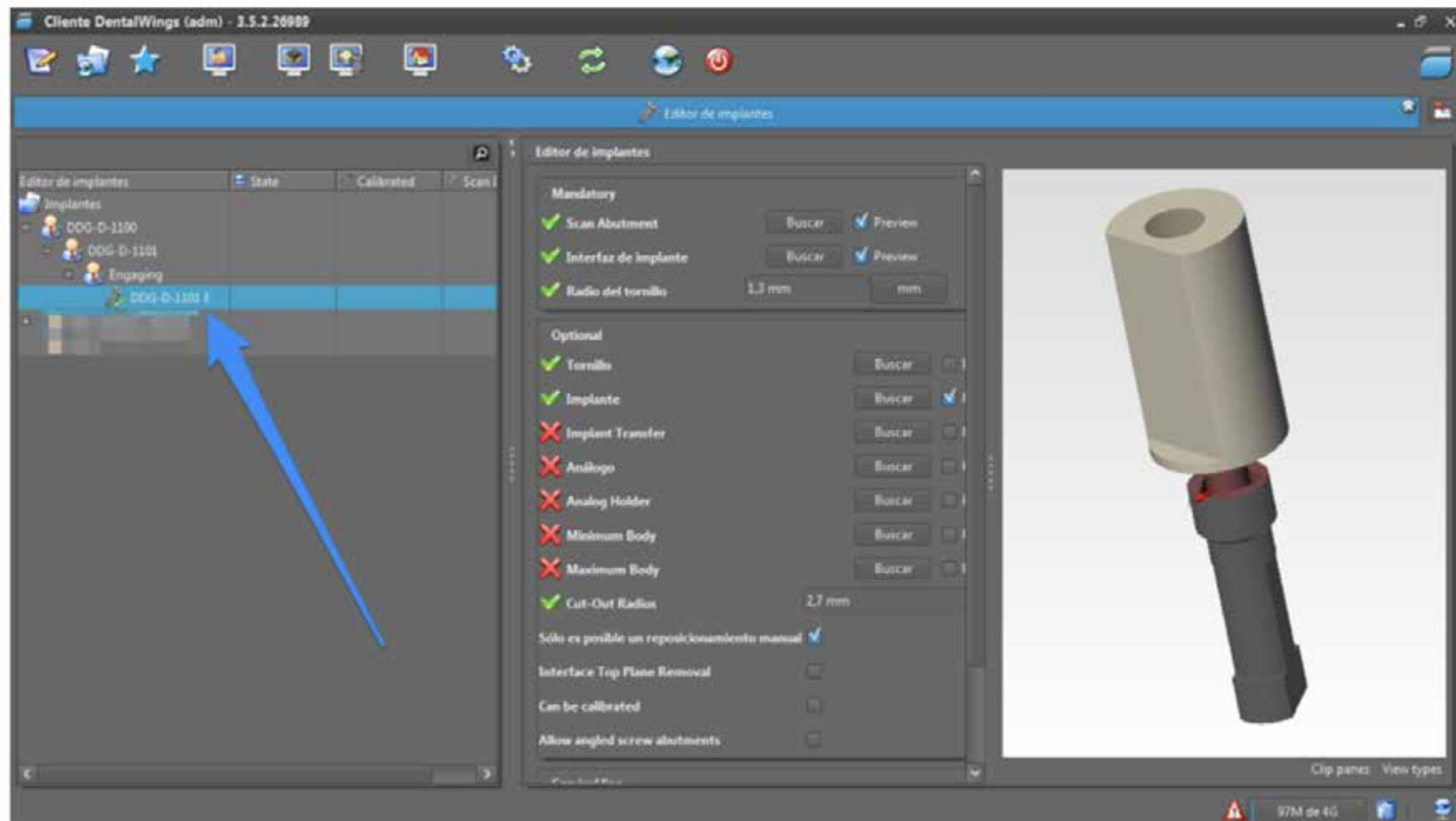
2. IMPORTAR LA LIBRERÍA DE SMART IMPLANT SOLUTIONS

6. Cuando la librería se exporta correctamente verá que se añade la librería de implantes disponible de SIS.



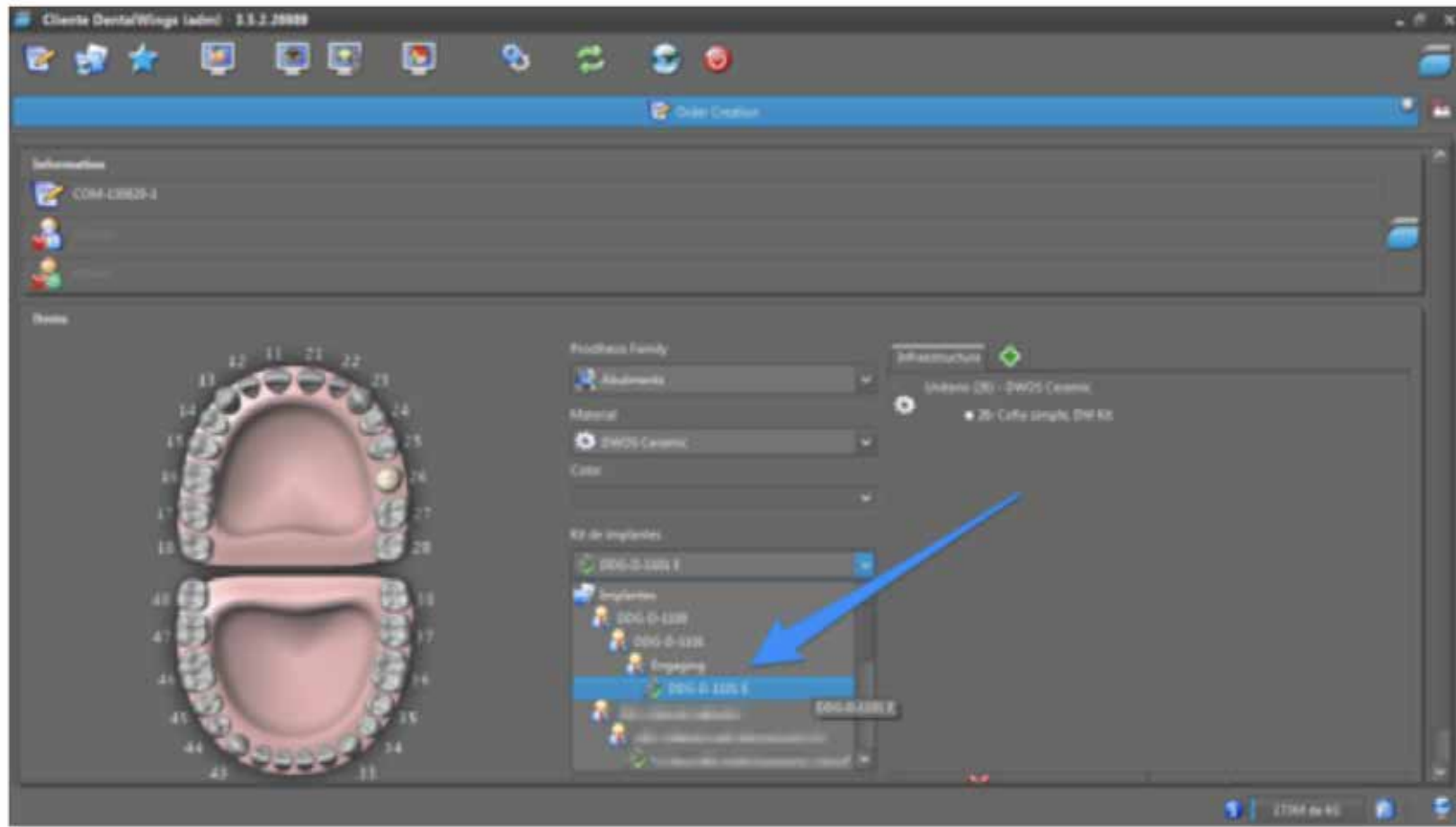
2. IMPORTAR LA LIBRERÍA DE SMART IMPLANT SOLUTIONS

7. Cuando selecciona un kit en la pantalla se muestran todos los componentes de este kit.



2. IMPORTAR LA LIBRERÍA DE SMART IMPLANT SOLUTIONS

8. Ahora ya puede elegir la conexión que quiera diseñar.



3. DISEÑAR

¡Todo esta listo para empezar a trabajar!



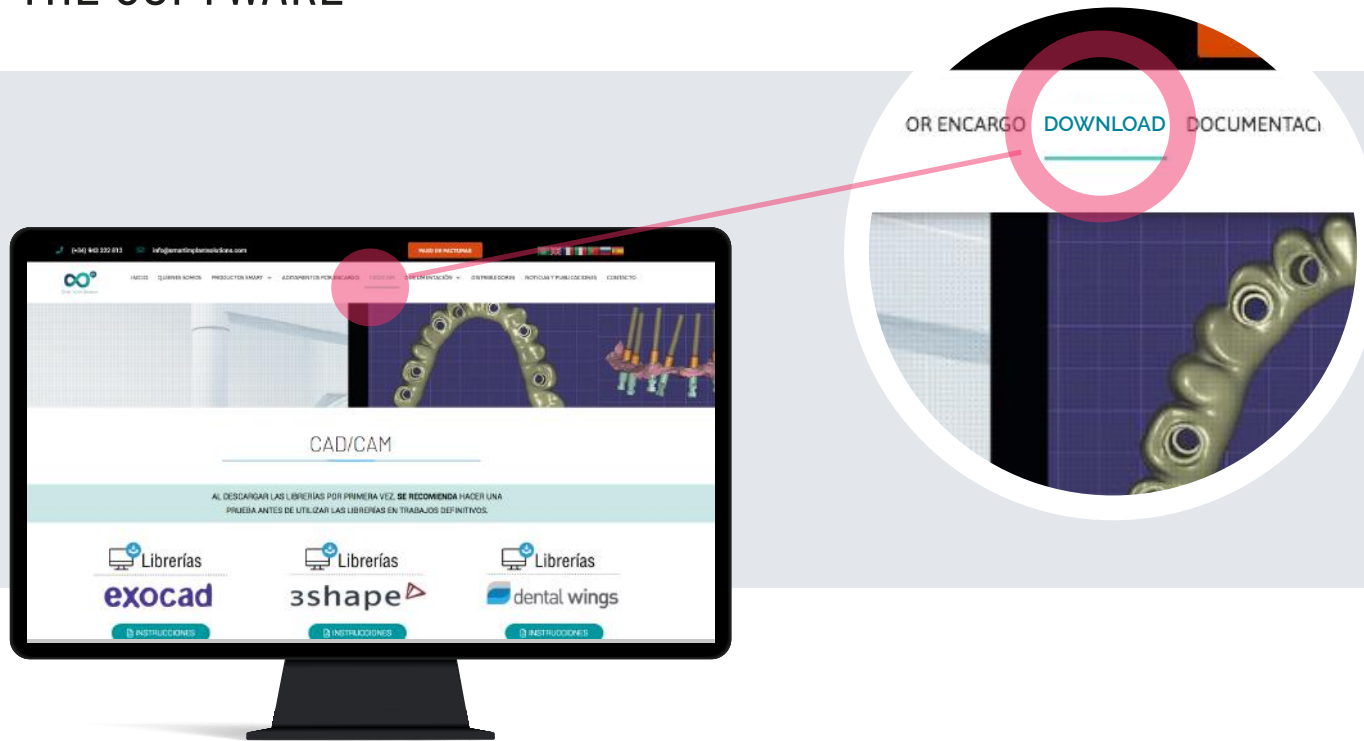


www.smartimplantsolutions.com



Instructions for importing Smart Implant Solutions libraries into Dental Wings software.

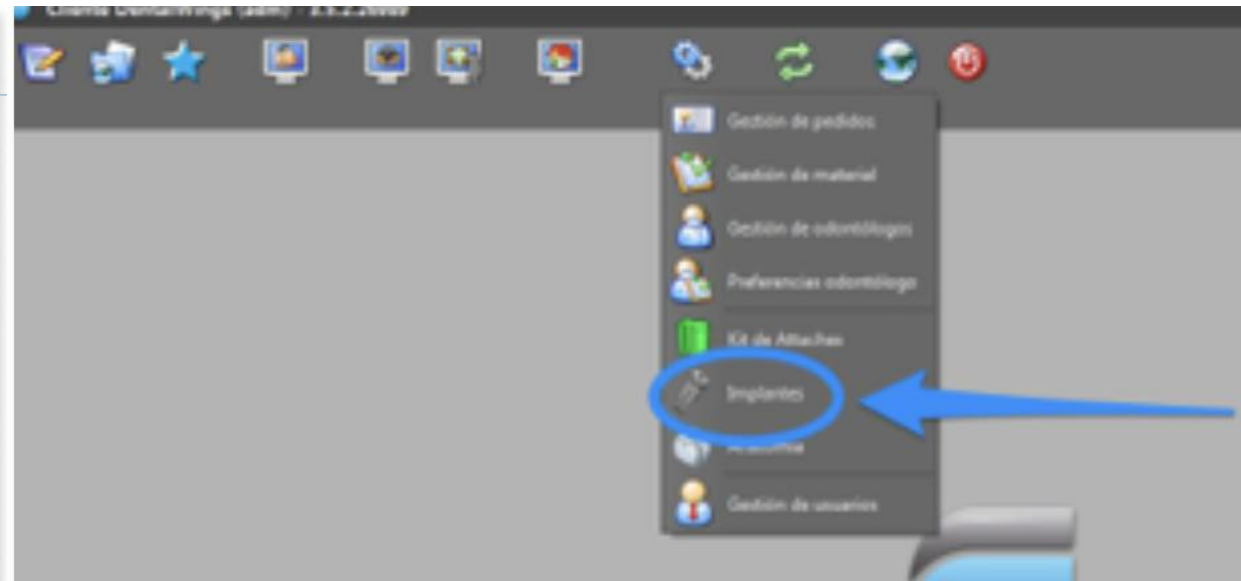
1. DOWNLOAD THE SOFTWARE



1. From a computer, connect to: www.smartimplantsolutions.com
2. In the DOWNLOADS menu, go to CAD/CAM section and click on “DENTAL WINGS LIBRARY”
A file called “SIS Dentalwings.zip” will be downloaded to the Downloads folder on your PC.

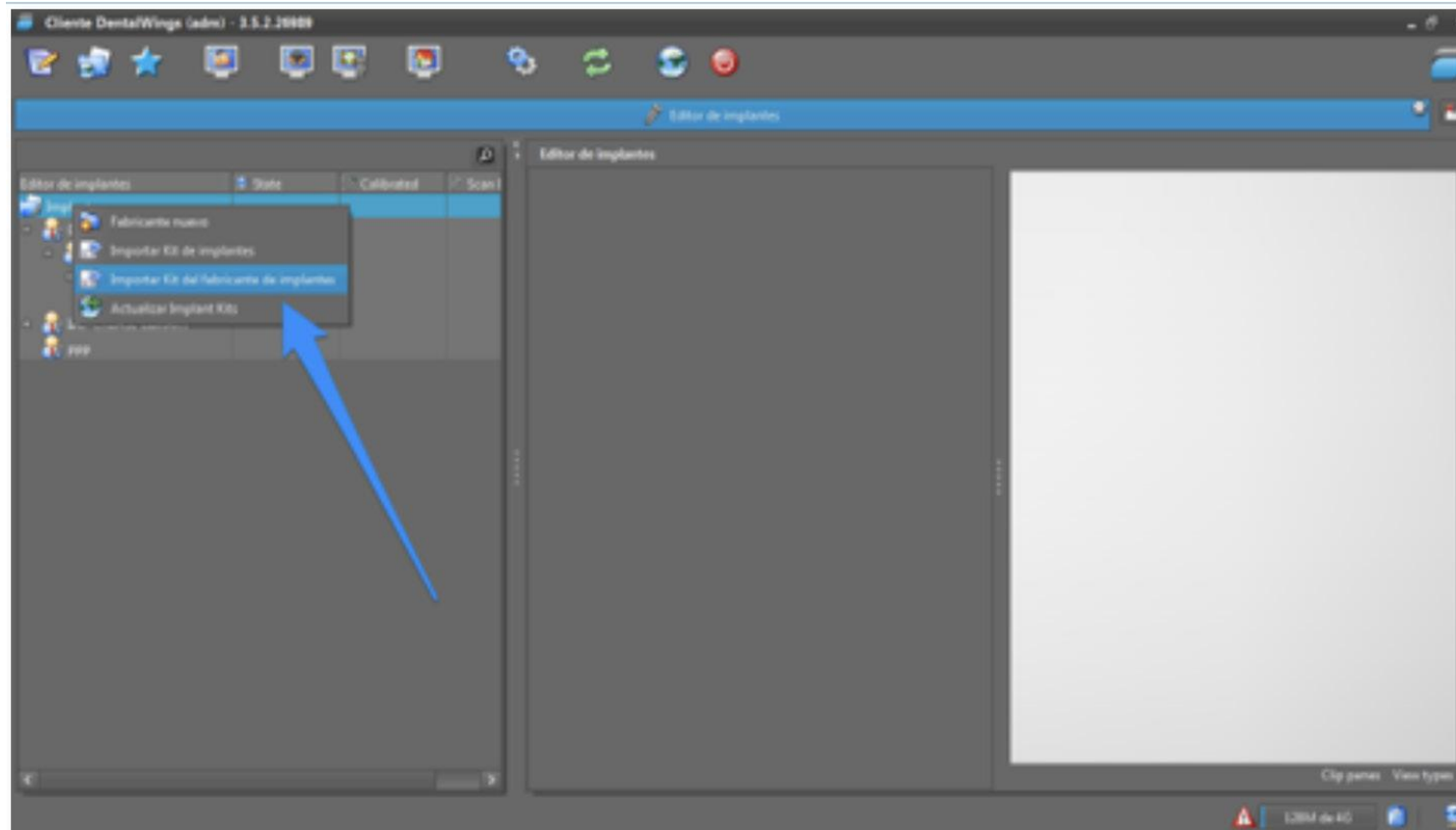
2. IMPORT THE SMART IMPLANT SOLUTIONS LIBRARY

1. Import the library into DWClient
2. In the menu, select Application - Implants



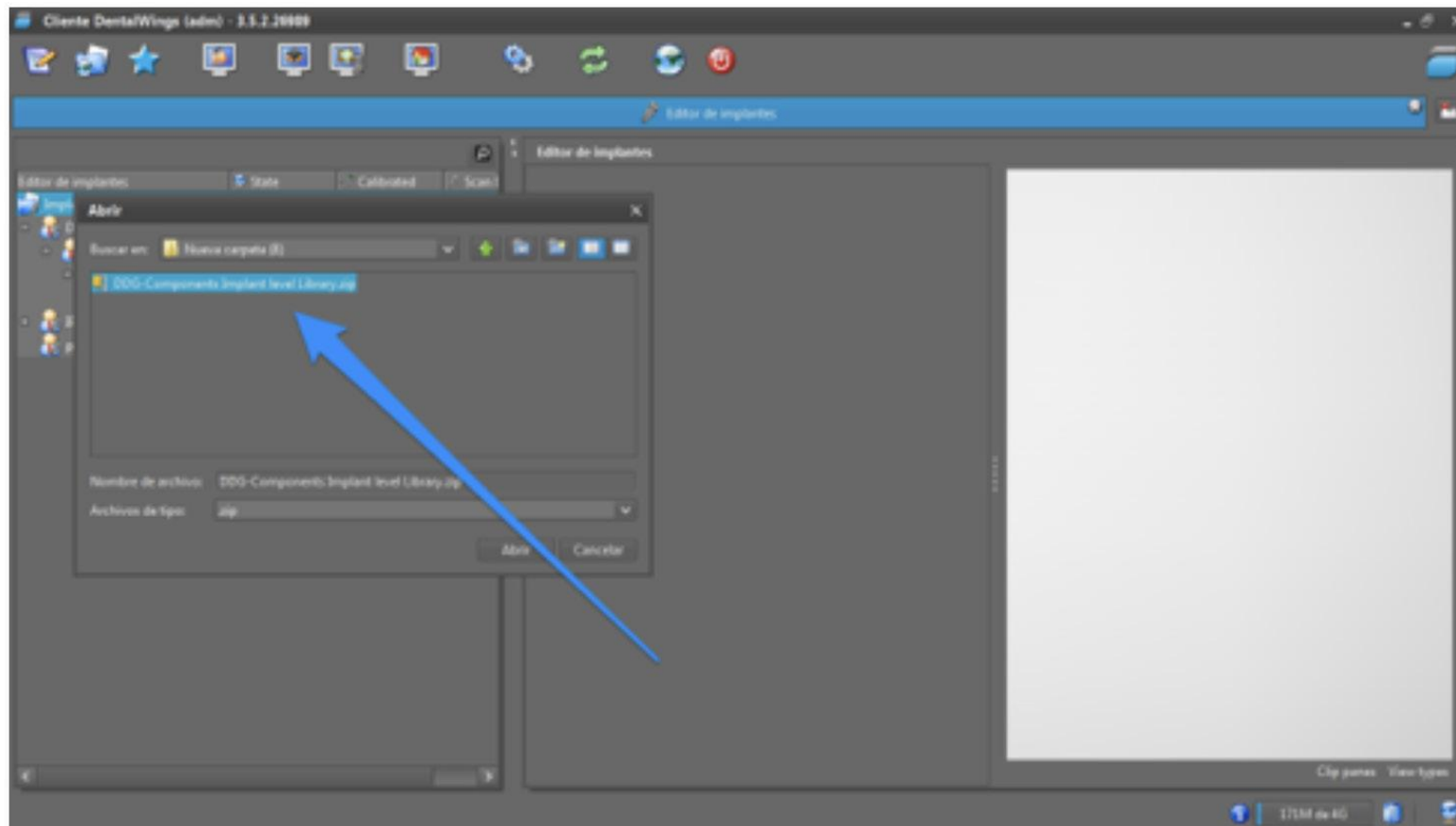
2. IMPORT THE SMART IMPLANT SOLUTIONS LIBRARY

3. Place your mouse cursor over the text "Implants" and press the right button.
4. In the drop-down menu, select "Import implant manufacturer kit"



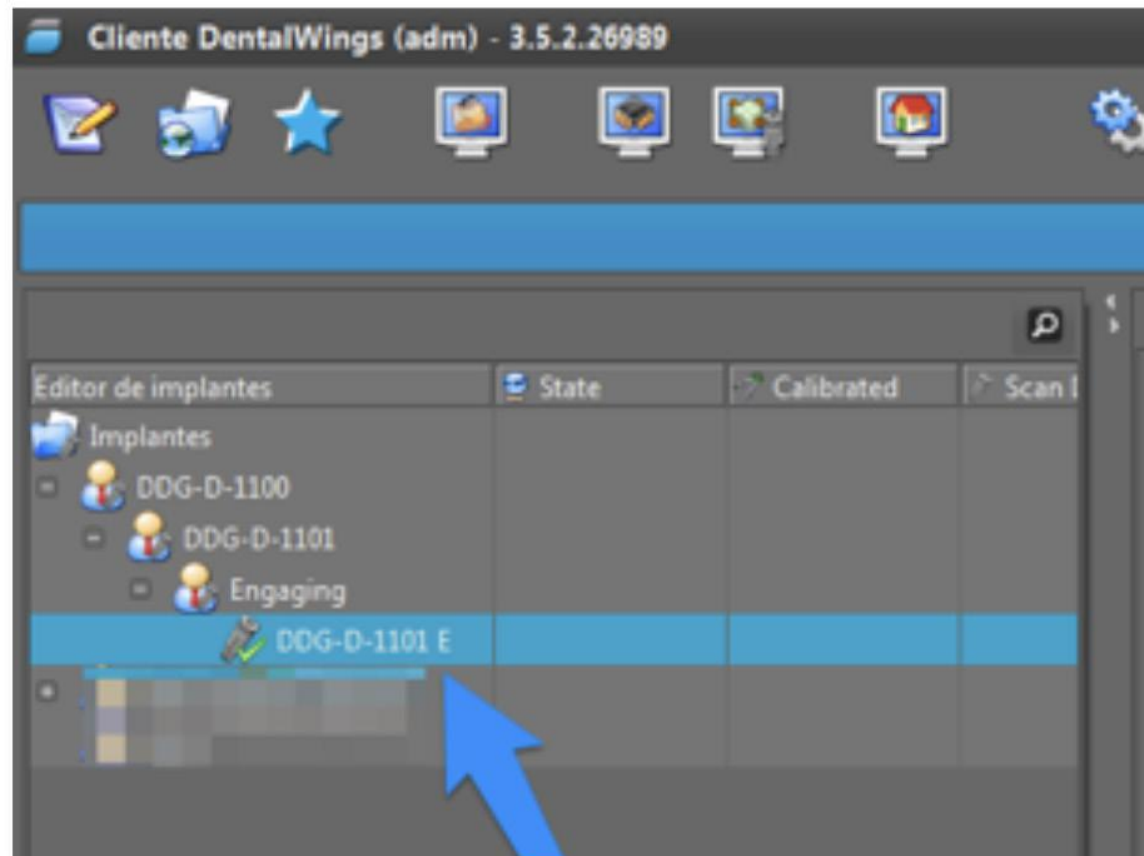
2. IMPORT THE SMART IMPLANT SOLUTIONS LIBRARY

5. Locate the downloaded file (it will be in the Downloads folder on your PC) and click on "Open".



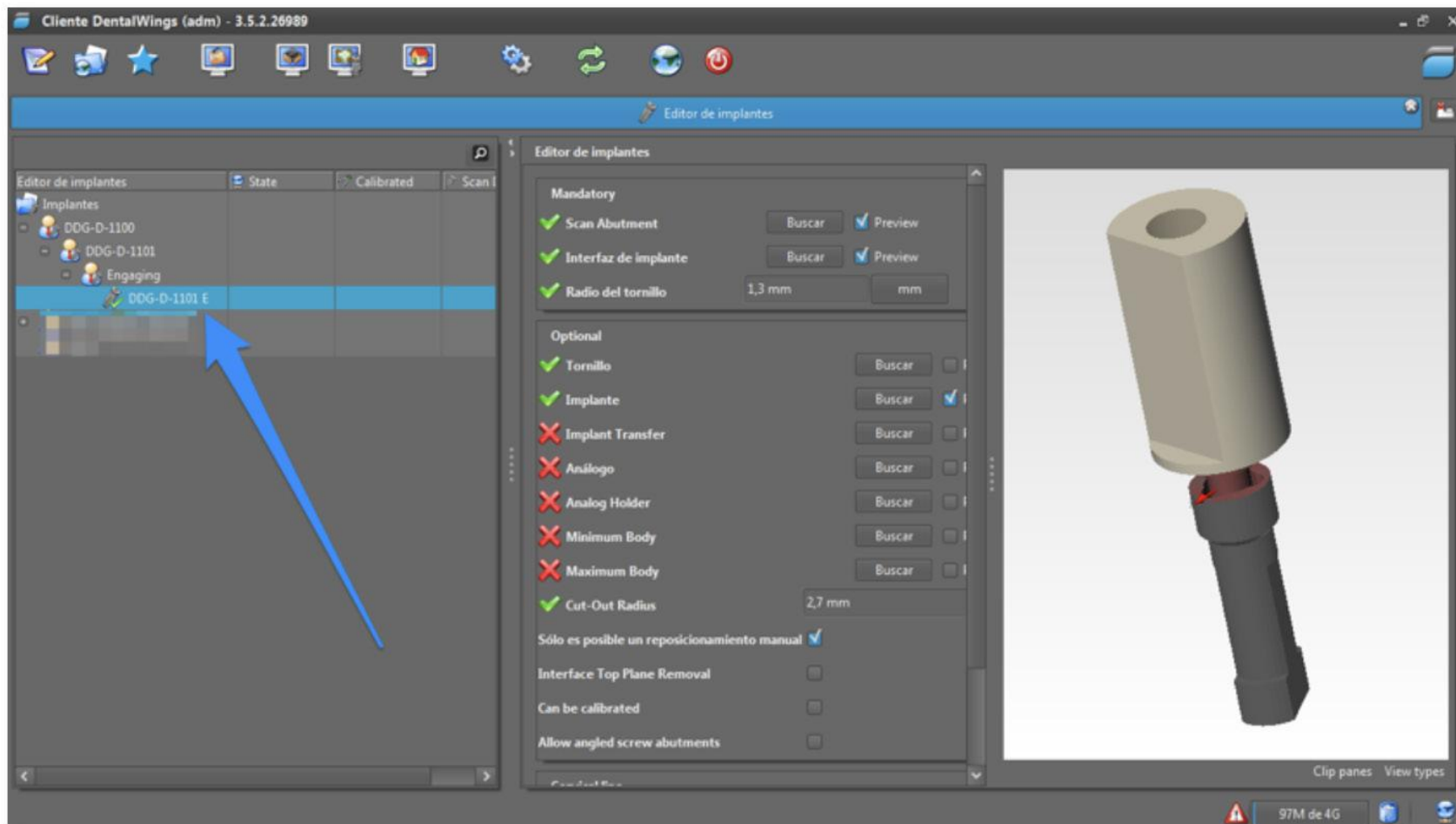
2. IMPORT THE SMART IMPLANT SOLUTIONS LIBRARY

6. When the library is exported correctly, you will see that the SIS implants library is added.



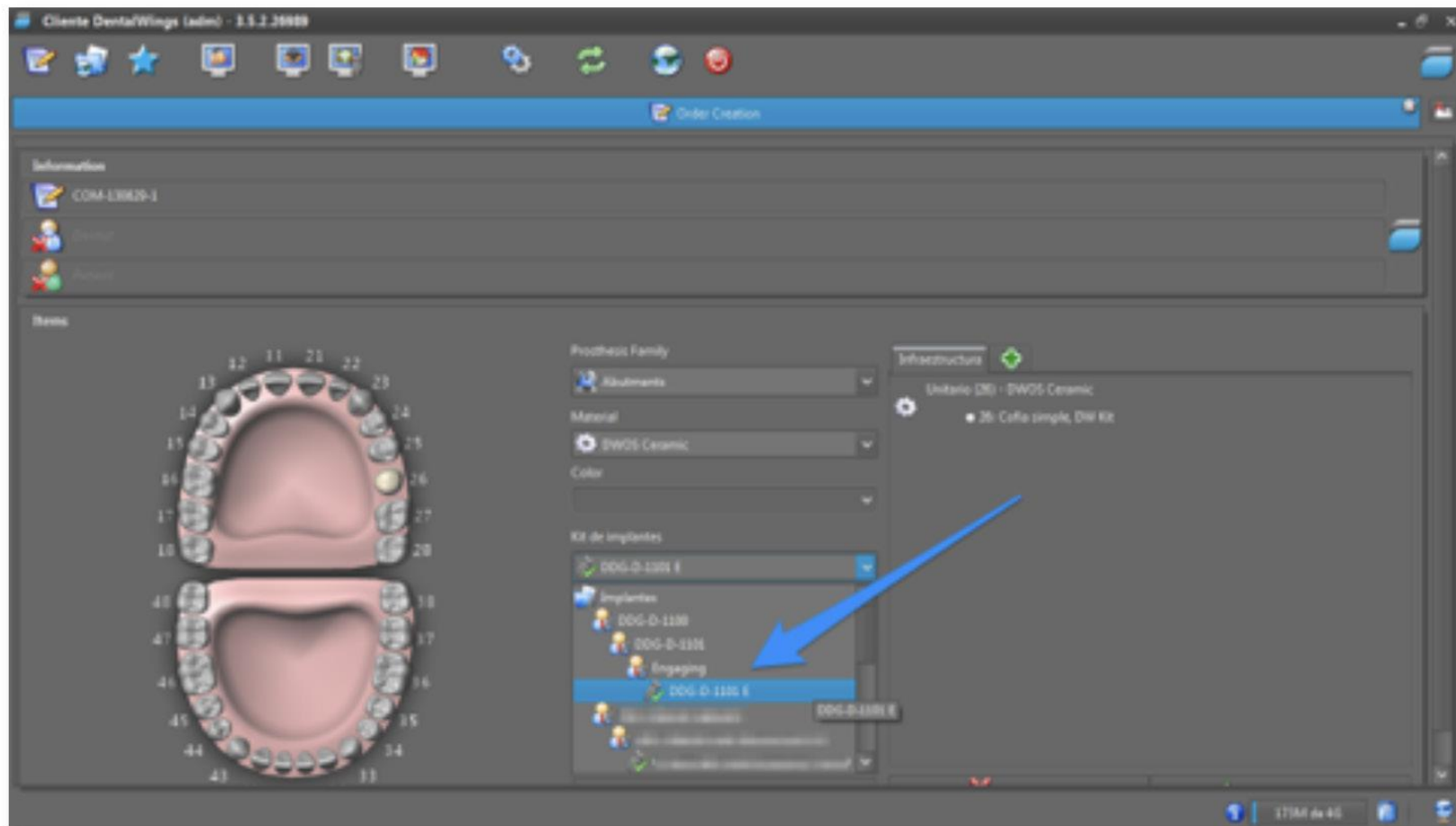
2. IMPORT THE SMART IMPLANT SOLUTIONS LIBRARY

7. When you select a kit, you will see all this kit components on your screen.



2. IMPORT THE SMART IMPLANT SOLUTIONS LIBRARY

8. Now, you can select the connection you want to design.



3. DESIGN

Everything is ready to start working!





www.smartimplantsolutions.com