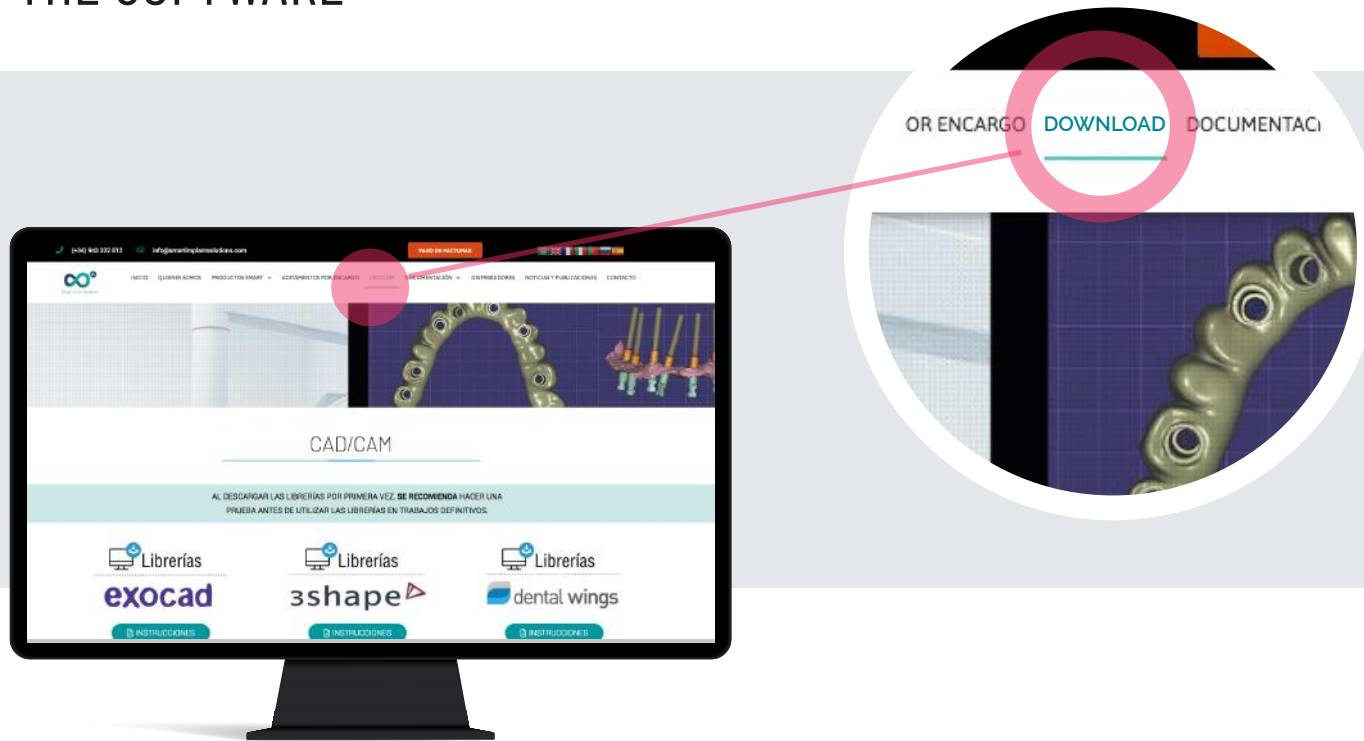




Instructions for importing Smart Implant Solutions libraries into Dental Wings software.

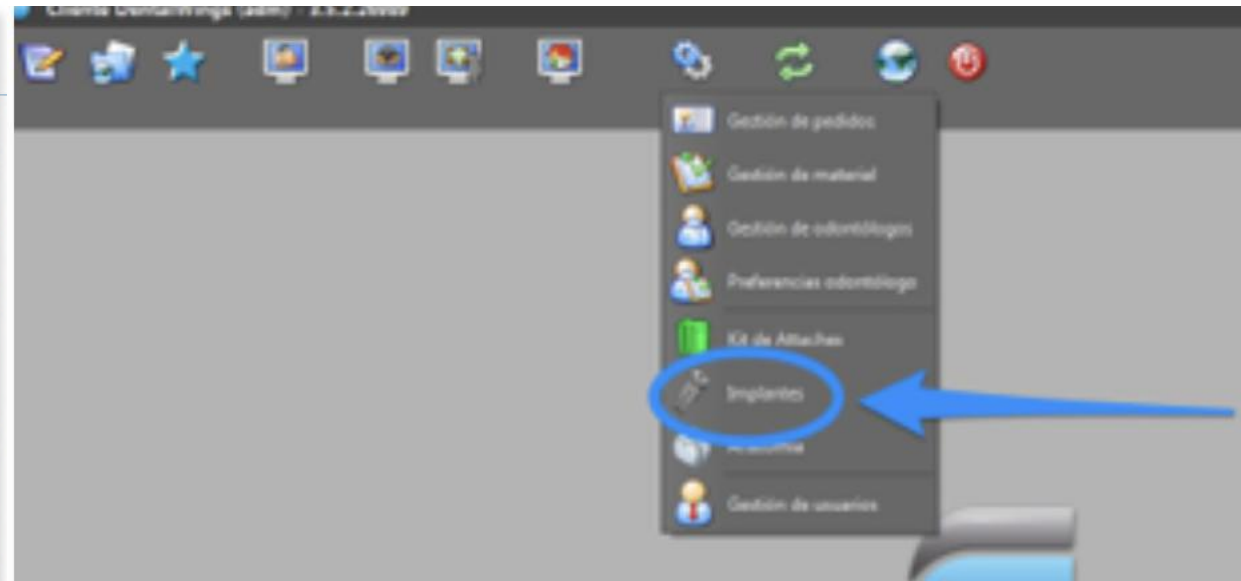
1. DOWNLOAD THE SOFTWARE



1. From a computer, connect to: www.smartimplantsolutions.com
 2. In the DOWNLOADS menu, go to CAD/CAM section and click on "DENTAL WINGS LIBRARY"
- A file called "SIS Dentalwings.zip" will be downloaded to the Downloads folder on your PC.

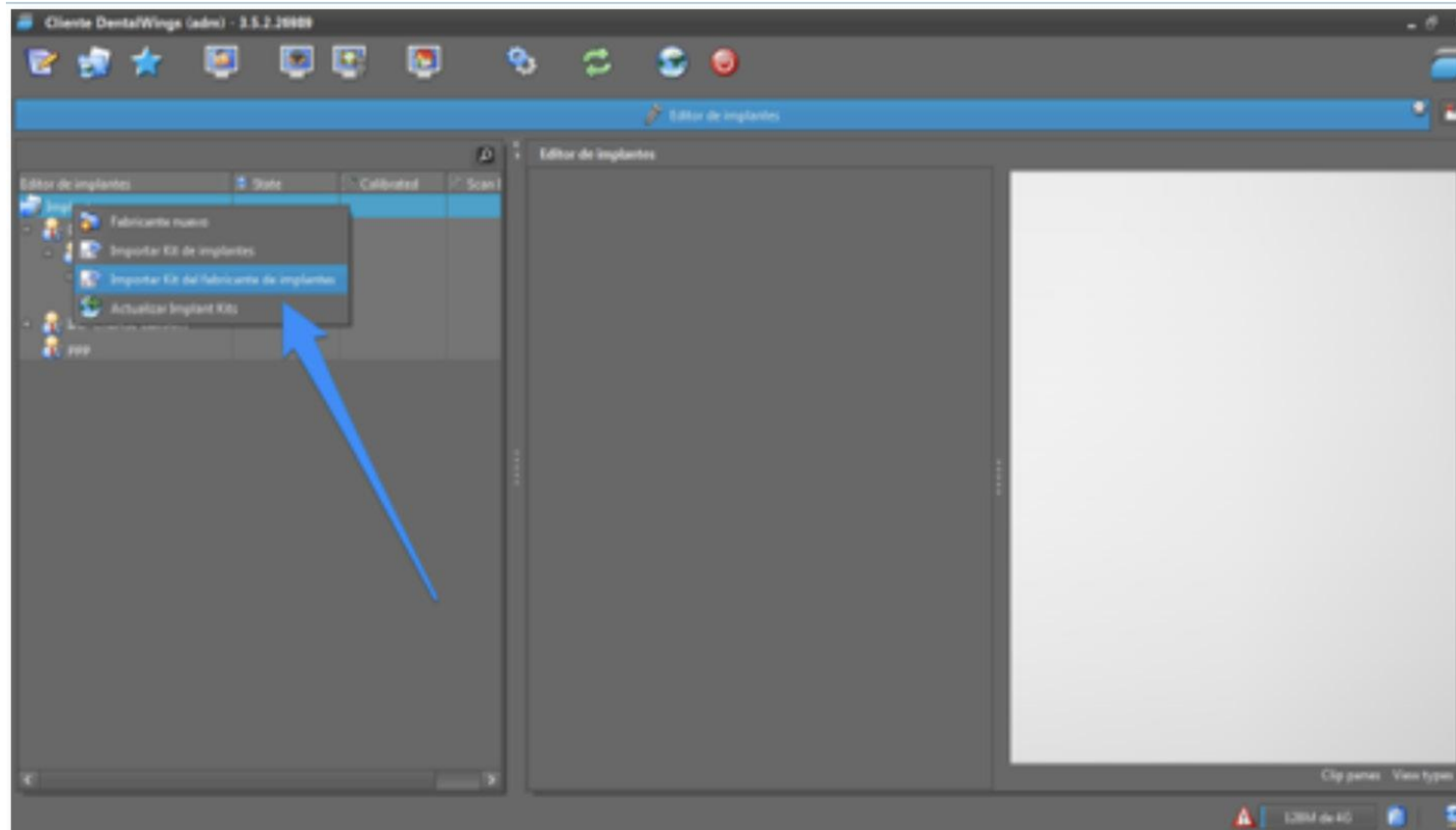
2. IMPORT THE SMART IMPLANT SOLUTIONS LIBRARY

1. Import the library into DWClient
2. In the menu, select Application - Implants



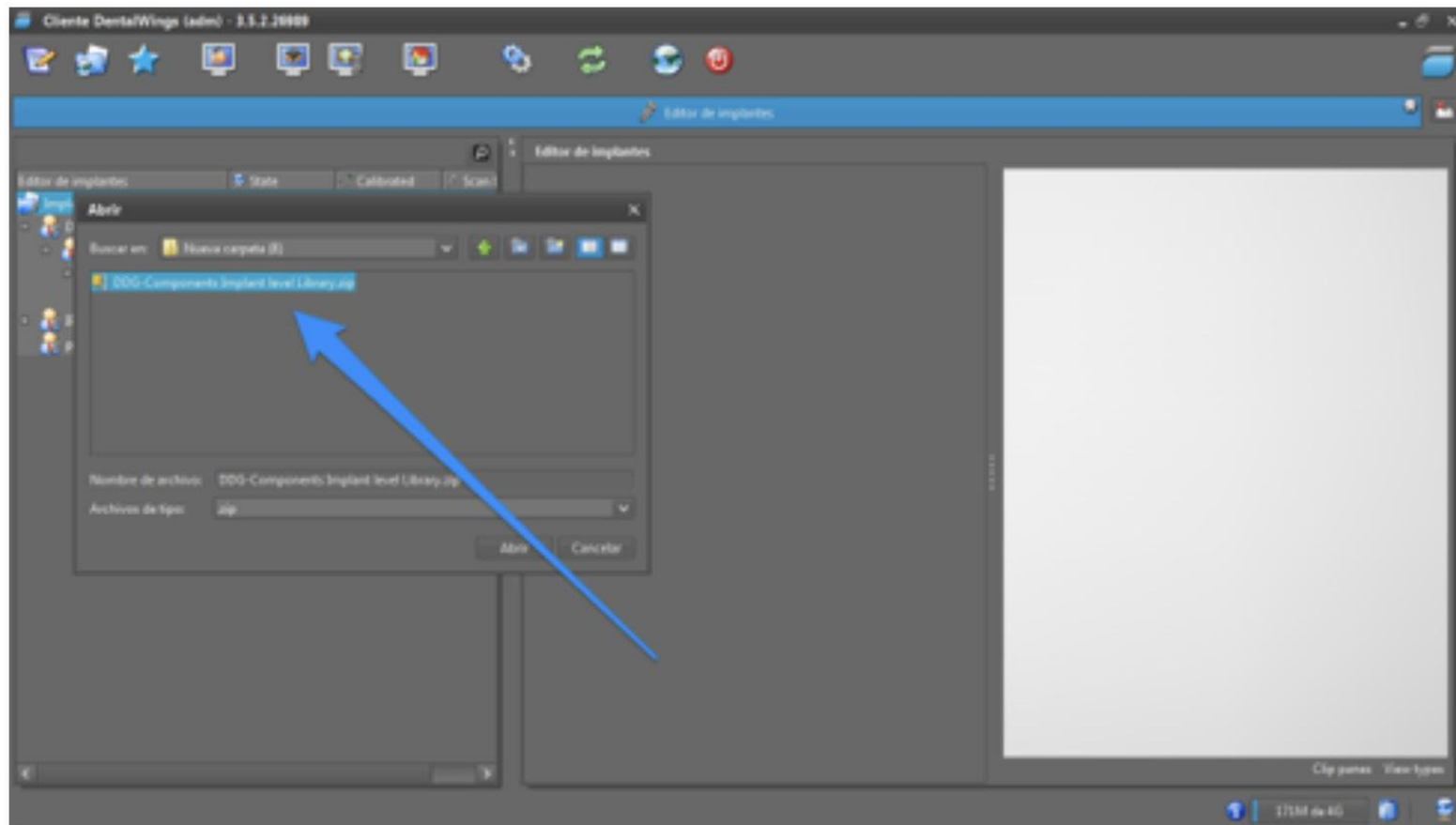
2. IMPORT THE SMART IMPLANT SOLUTIONS LIBRARY

3. Place your mouse cursor over the text "Implants" and press the right button.
4. In the drop-down menu, select "Import implant manufacturer kit"



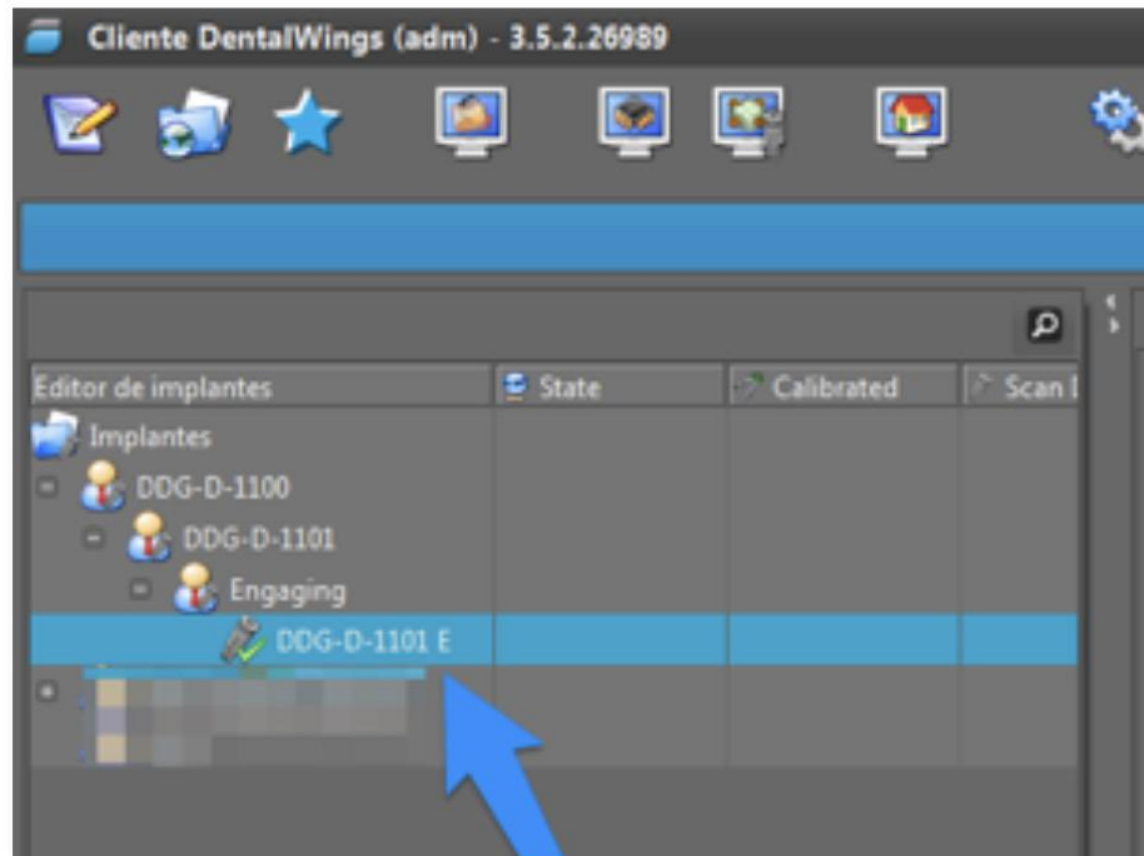
2. IMPORT THE SMART IMPLANT SOLUTIONS LIBRARY

5. Locate the downloaded file (it will be in the Downloads folder on your PC) and click on "Open".



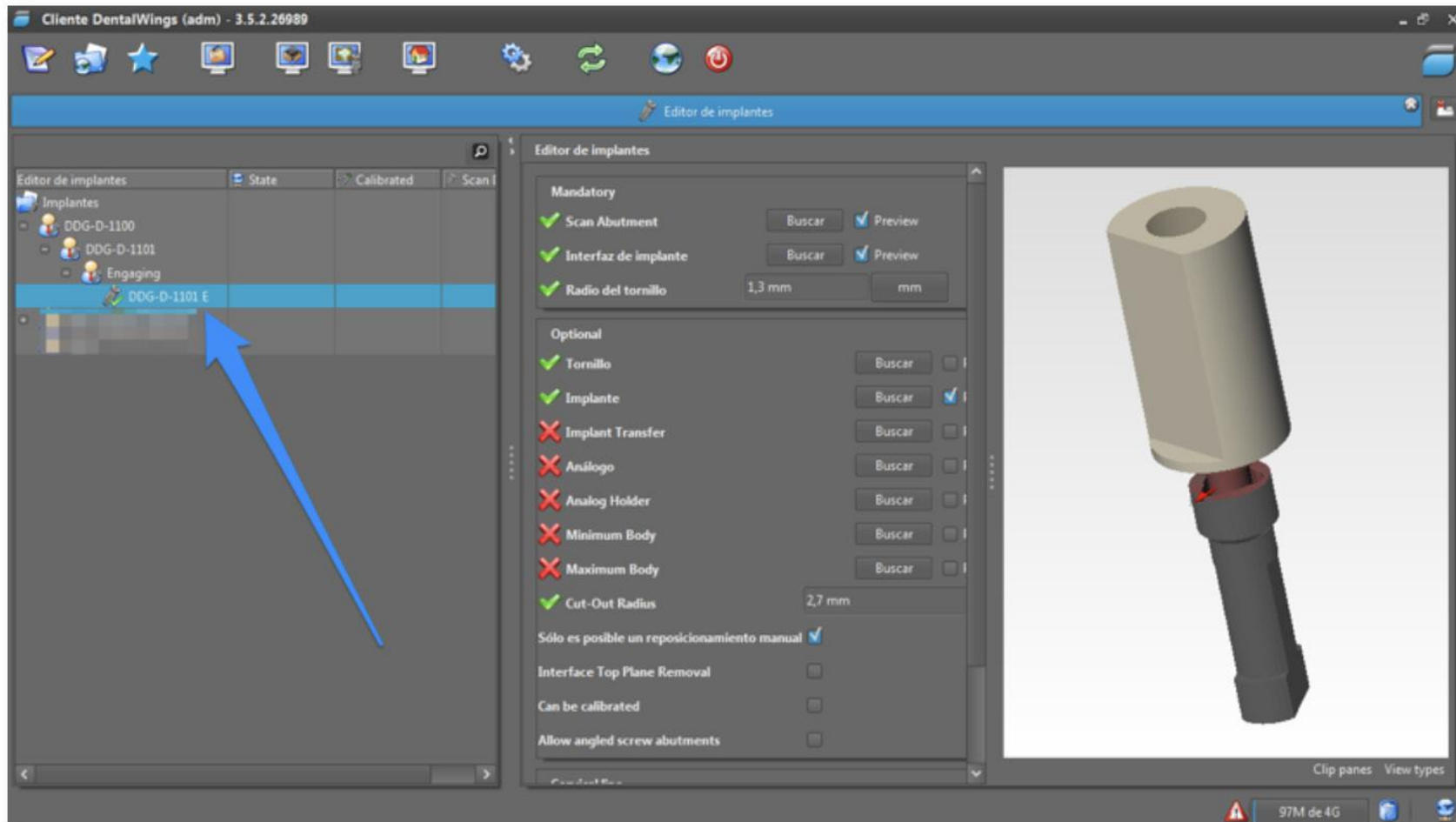
2. IMPORT THE SMART IMPLANT SOLUTIONS LIBRARY

6. When the library is exported correctly, you will see that the SIS implants library is added.



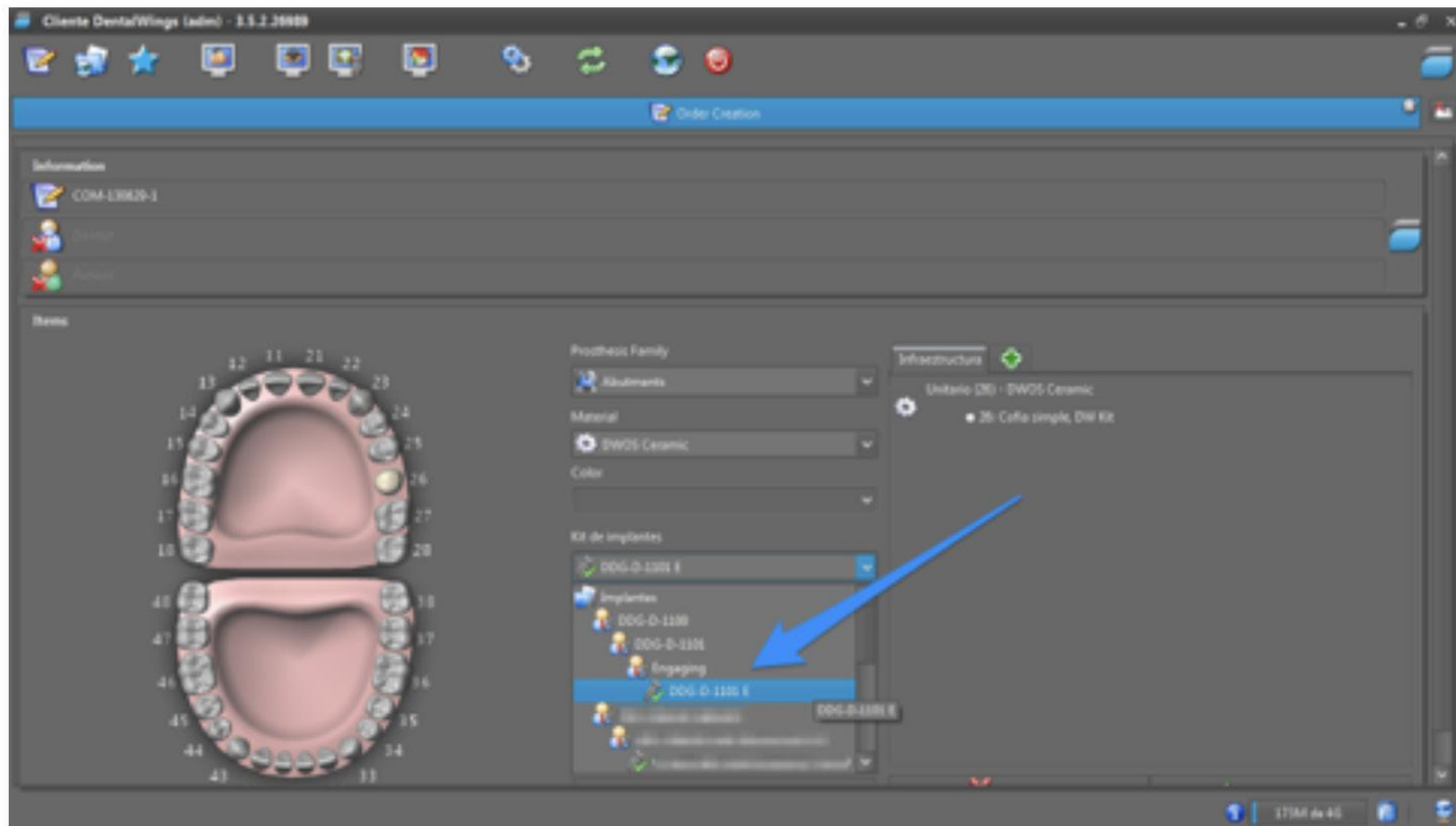
2. IMPORT THE SMART IMPLANT SOLUTIONS LIBRARY

7. When you select a kit, you will see all this kit components on your screen.



2. IMPORT THE SMART IMPLANT SOLUTIONS LIBRARY

8. Now, you can select the connection you want to design.



3. DESIGN

Everything is ready to start working!





www.smartimplantsolutions.com