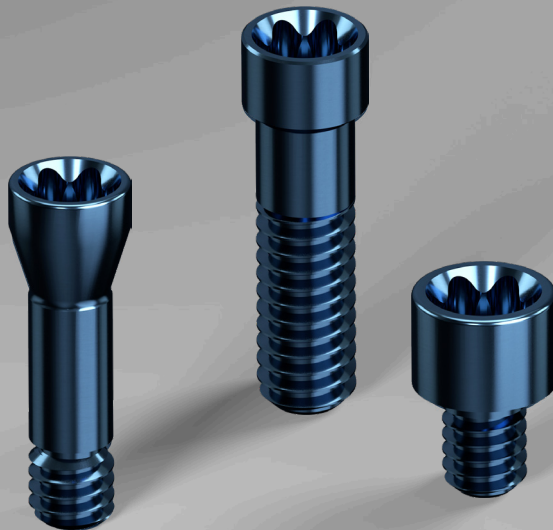




Smart Implant Solutions



**SMART ANGLE**

# SMART ANGLE

THE MARKET'S SAFEST ANGLED SOLUTION

LA SOLUCIÓN ANGULADA MÁS SEGURA DEL MERCADO



30°



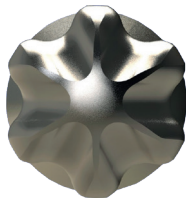
**IMPROVED CONNECTION:** It prevents screw crowning.  
**CONEXIÓN MEJORADA:** Evita el coronamiento de los tornillos.

**BLUE ANODIZED:** It allows to make a clear distinction between a standard screw and a Smart Angle screw.  
**ANODIZADO AZUL:** Permite distinguir un tornillo estándar a un tornillo Smart Angle.

**MATERIAL: Grade 5 Titanium.**  
**MATERIAL:** Titanio grado 5.

PATENTE INTERNAL BALL HEAD - ES 2577509 T3

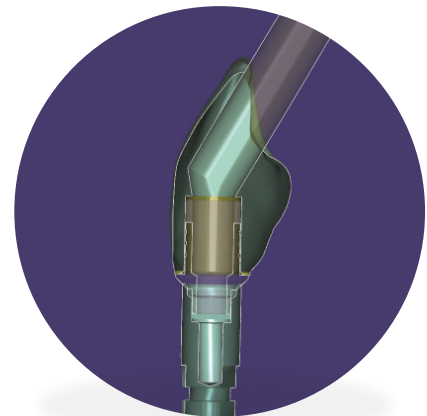
## SMART ANGLE SCREWDRIVER TIP / PUNTA DESTORNILLADOR SMART ANGLE



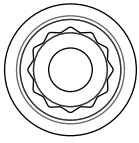
SHORT/CORTA  
20mm  
SIS-9142C

MEDIUM/MEDIANA  
25mm  
SIS-9142M

LONG/LARGA  
35mm  
SIS-9142L

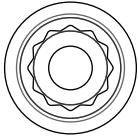


Both the Smart Implant Solutions interfaces and the implant libraries are ready to use with the smart angle screws.  
Las interfases, bases de Cr-Co y las librerías de implantes están preparadas para utilizar la solución angulada Smart Angle.



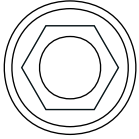
## ASTRA® TECH OSSEOSPEED®

Internal Conical/Cónica Interna



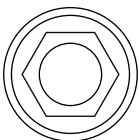
## ASTRA® TECH SYSTEM™ EVOLUTION

Internal Conical/Cónica Interna



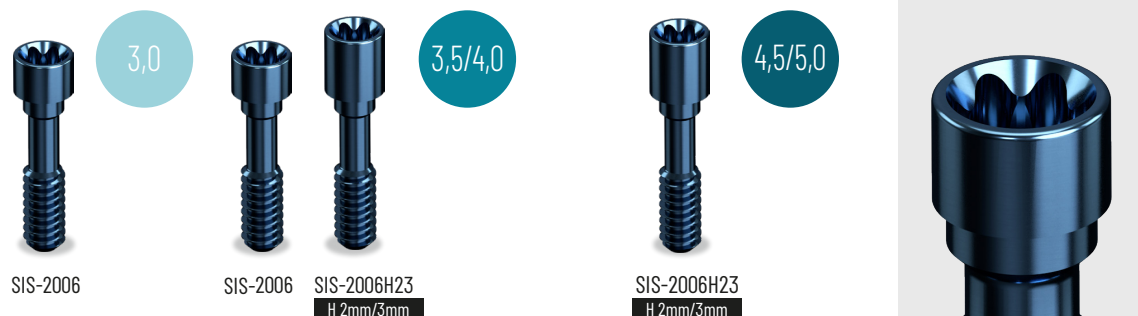
## BIOHORIZONS®

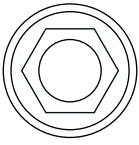
Internal Hexagon/Hexágono Interno



## BIOMET 3i® CERTAIN®

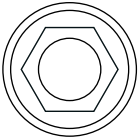
Internal Hexagon "Click"/Hexágono Interno "Click"





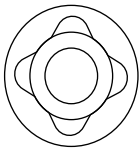
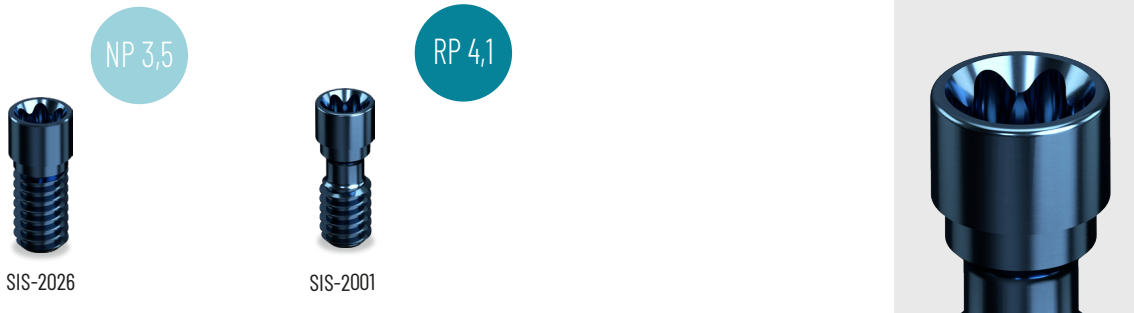
## BIOMET 3i® OSSEOTITE

External Hexagon/Hexágono Externo



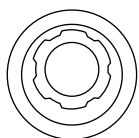
## BTI®

External Hexagon/Hexágono Externo



## BTI®

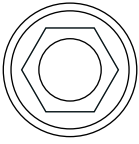
Internal Tetra-lobe/Tetralobular Interno



## DENSTPLY® ANKYLOS®

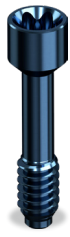
Internal Ankylos/Interna Ankylos





## DENSTPLY® XIVE®

Internal Conical/Cónica Interna



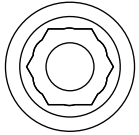
3,4

SIS-2615N



3,8

SIS-2615R



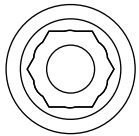
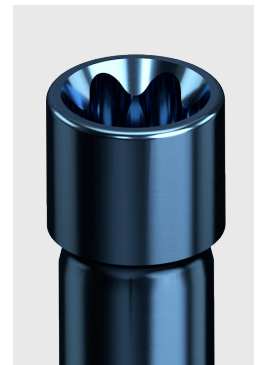
## DENTIUM SUPERLINE™ & IMPLANTIUM®

Interna Conical/Cónica Interna



SDT

SIS-3015R



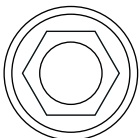
## DIO® UFII®

Interna Conical/Cónica Interna



SDT

SIS-2915R



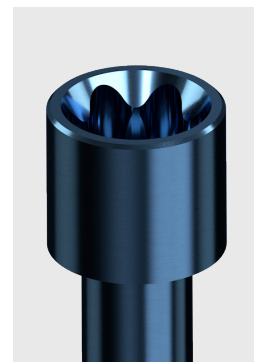
## MEGAGEN ANYRIDGE®

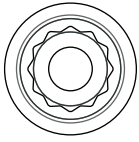
Internal Conical/Cónica Interna



SDT

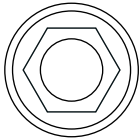
SIS-2515R





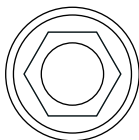
## MIS® C1/V3

Internal Conical Hexagon/Hexágono Cónico Interno



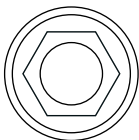
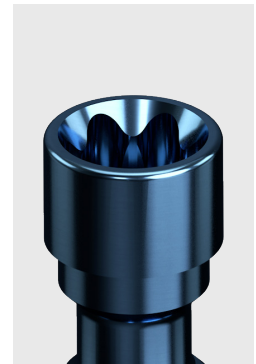
## MIS® SEVEN®

Internal Hexagon/Hexágono Interno



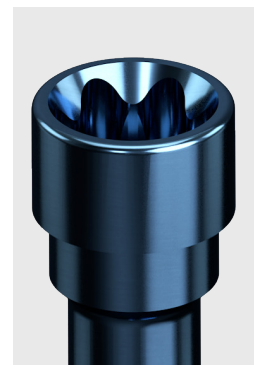
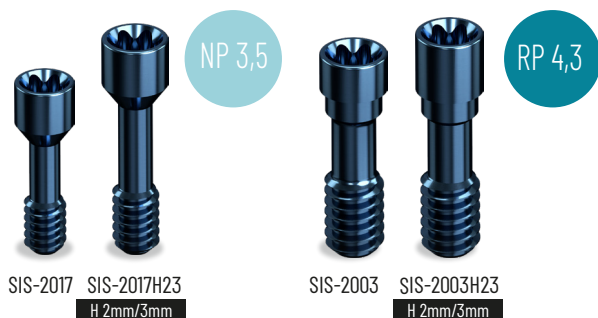
## NOBEL BIOCARE® BRANEMARK®

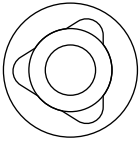
External Hexagon/Hexágono Externo



## NOBEL BIOCARE® NOBELACTIVE®

Internal Active/Interna Activa





## NOBEL BIOCARE® REPLACE SELECT®

Tri-lobe/Trilobular



SIS-2005

NP 3,5



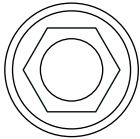
SIS-2004

RP 4,1



SIS-2004

WP 5,1



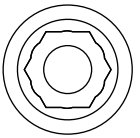
## NEODENT GM® (Helix GM®, Drive GM®, Titamax GM®)

Internal Conical/Cónica Interna



SIS-2415

STD



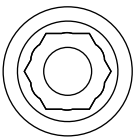
## NEOBIOTECH® IS SYSTEM

Internal Conical/Cónica Interna



SIS-2215R

STD



## OSSTEM® TS/ HIOSSEN® ET

Internal Conical/Cónica Interna



SIS-2815N

MINI

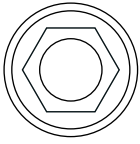


SIS-2815R

STD







## PHIBO® TSH®

External Hexagon/Hexágono Externo



NP 3,3

SIS-2024



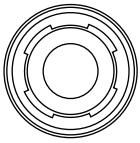
RP 4,0

SIS-2001



WP 5,0

SIS-2001



## STRAUMANN® BONE LEVEL®

Internal/Interna



NC 3,3

SIS-2009



SIS-2009H23  
H 2mm/3mm

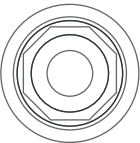


RC 4,1

SIS-2009



SIS-2009H23  
H 2mm/3mm



## STRAUMANN® TISSUE LEVEL®

Octogonal/Octógono



RN 4,8

SIS-2008

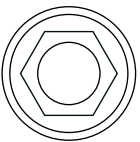
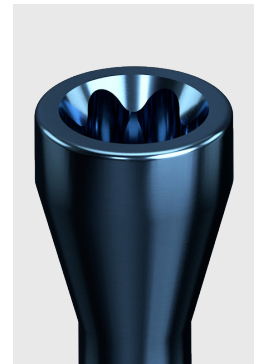


SIS-2010  
Synocta



WN 6,5

SIS-2008



## SWEDEN & MARTINA® PREMIUM KOHNO®

Internal/Interna



3,3

SIS-2021



3,8

SIS-2021

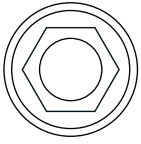


4,25

SIS-2016





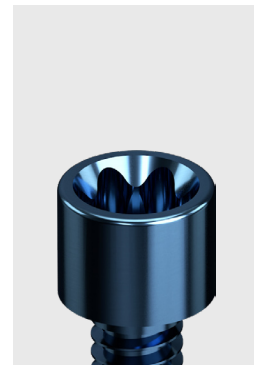


# ZIMMER® SCREW-VENT®

Internal Hexagon/Hexágono Interno



# MULTI-UNIT





[www.smartimplantsolutions.com](http://www.smartimplantsolutions.com)